

# TED - 014MS00110

Vinra Glen Frost X Outlaw  
 MSUSA000000450289  
 Vinra Frost Ted  
 aAa: 612345 DMS: 135;123

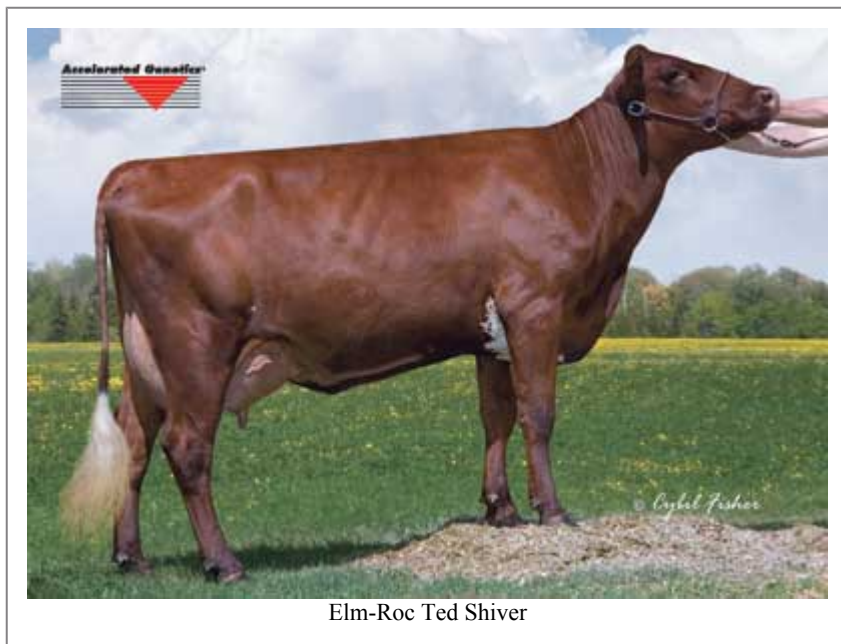


## USDA SIRE EVALUATION Sire Summary - (08/10)

	156 Daus	84 Herds
Milk	<b>709</b>	<b>92%R</b>
Protein	<b>17</b>	<b>-0.03</b>
Fat	<b>26</b>	<b>0</b>
Net Merit	<b>\$353</b>	
Fluid Merit	<b>\$370</b>	
Cheese Merit	<b>\$338</b>	

## USDA SIRE EVALUATION Type Summary - (08/10)

	53 Daus	26 Herds		
PTAT	<b>-0.1</b>	<b>81%R</b>	PPR	<b>106</b>
PL	<b>4.3</b>	<b>69%</b>		
SCS	<b>2.89</b>	<b>84%</b>		
DPR	<b>0.5</b>	<b>66%</b>		
IB	<b>5.6</b>			



Elm-Roc Ted Shiver



Luchterhand Ted Lexy



Rosecrest Teds Noel

## Information Provided By:

**Accelerated Genetics®**



E10890 Penny Lane  
 Baraboo, WI. 52913  
 1.800.451.9275 (toll free)  
 608.356.8357 (local & international)  
 info@accelgen.com  
 www.accelgen.com

## AMSS Linear Profile - August 2010

	-3	-2	-1	+1	+2	+3	
Stature		██████████				-2.30	Short
Strength			██████████			-0.90	Frail
Body Depth			██████████			-1.30	Shallow
Dairy Form				██████████		0.20	Open Rib
Rump Angle				██████████		0.10	Sloped
Thurl Width			██████████			-0.40	Narrow
Rear Leg Set			██████████			-0.20	Posty
Foot Angle				██████████		0.00	Steep
Fore Attachments			██████████			-0.30	Loose
Rear Udder Height				██████████		0.60	High
Rear Udder Width				██████████		0.90	Wide
Udder Cleft				██████████		1.00	Strong
Udder Depth			██████████			-1.10	Deep
Front Teat Placement				██████████		1.20	Close
Teat Length			██████████			-0.90	Short

