

ALEXANDER - 014JE00472

Artist X Bold
 JEUSA000067037158
 Forest Glen Artist Alexander
 aAa: 351 DMS: 345;456



USDA SIRE GENOMIC EVALUATION Sire Summary - (04/10)

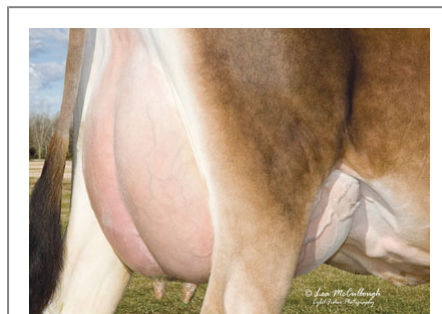
	115 Daus	62 Herds
Milk	378	92%R
Protein	22	0.05
Fat	47	0.16
Net Merit	\$410	
Fluid Merit	\$373	
Cheese Merit	\$457	

USDA SIRE GENOMIC EVALUATION Type Summary - (04/10)

	79 Daus	50 Herds		
PTAT	0.5	86%R	JPI	135
UDC	1.81			
PL	4.2	70%		
SCS	2.98	81%		
DPR	0.9	67%		
IB	5.5			



Valley-Oaks Alexander Wedding-P



K&K Alexander Beth 2230

Information Provided By:

Accelerated Genetics®



E10890 Penny Lane
 Baraboo, WI. 52913
 1.800.451.9275 (toll free)
 608.356.8357 (local & international)
 info@accelgen.com
 www.accelgen.com

AJCA/USDA Genomic Linear Profile - April 2010

	-3	-2	-1	+1	+2	+3	
Stature						-0.30	Short
Strength						-0.30	Frail
Dairy Form						0.20	Open Rib
Rump Angle						-1.40	High Pins
Thurl Width						-0.20	Narrow
Rear Leg Set						-0.20	Posty
Foot Angle						0.70	Steep
Fore Attachments						0.80	Strong
Rear Udder Height						-0.10	Low
Rear Udder Width						0.10	Wide
Udder Cleft						-0.10	Weak
Udder Depth						1.60	Shallow
Front Teat Placement						0.30	Close
Teat Length						-0.30	Short



Valley-Oaks Alexander Wedding-P



:ucky L Midde



Forest Glen Alexander Mary



K&K Alexander Lushia 2219



Lucky L Bernie