

DOTSON - 014HO04956

O Man X Durham
 HOUSA000135691067
 Tomlu Oman Dotson-ET EX-91
 aAa: 312456 DMS: 456;345



USDA SIRE GENOMIC EVALUATION Sire Summary - (08/10)

	98 Daus	63 Herds
Milk	1828	93%R
Protein	55	0
Fat	52	-0.05
Net Merit	\$435	
Fluid Merit	\$437	
Cheese Merit	\$444	

USDA SIRE GENOMIC EVALUATION Type Summary - (08/10)

	90 Daus	62 Herds		
PTAT	1.13	90%R	TPI	1903
UDC	-0.05		FLC	2.17

Calving Ease	CE%	Rel	Calvings
Service Sire	3%	95%	2328
Daughter	6%	77%	105
Stillbirth	SB%	Rel	Calvings
Service Sire	6.6%	84%	1730
Daughter	7.4%	70%	100

PL	1.5	79%	Milkout	> Avg
SCS	2.96	86%	Disposition	Avg
DPR	0.5	76%		
IB	6.1			



Ocooch Dotson Angelina



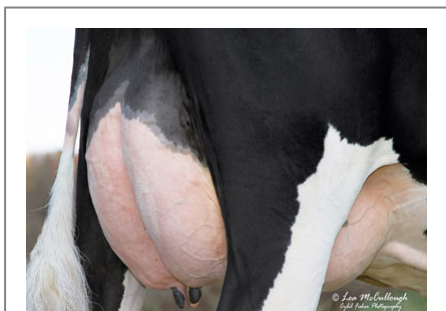
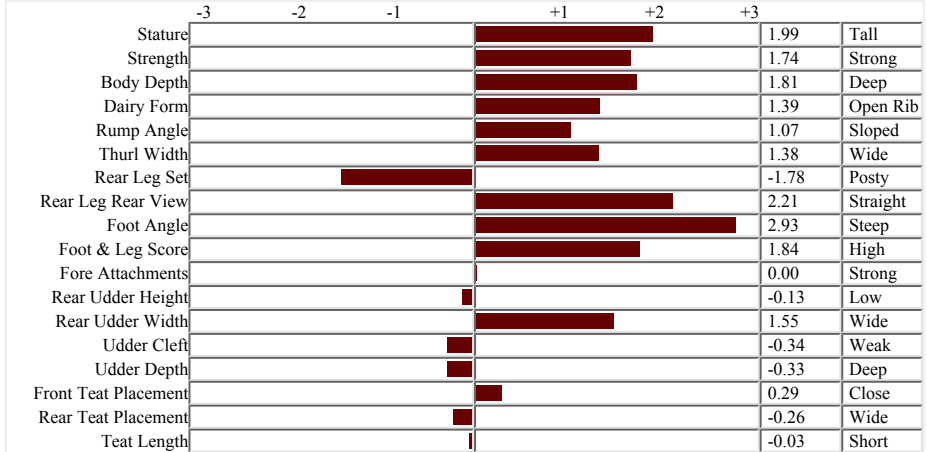
Ocooch Dotson Angelina

Information Provided By:



E10890 Penny Lane
 Baraboo, WI. 52913
 1.800.451.9275 (toll free)
 608.356.8357 (local & international)
 info@accelgen.com
 www.accelgen.com

Holstein/USA Genomic Linear Profile - August 2010



Ocooch Dotson Angelina



Schrobro Dotson Mavis



Michigan Dotson Beetle



Mc Kaeding Dotson 1100



Ocooch Dotson Angelina



Duban Dotson #227