

ROD - 014H004953

Titanic X Bw Marshall
 HOUSA000061556923
 Shadycrest-H Titanic Rod-ET EX-90
 aAa: 312456 DMS: 126;123

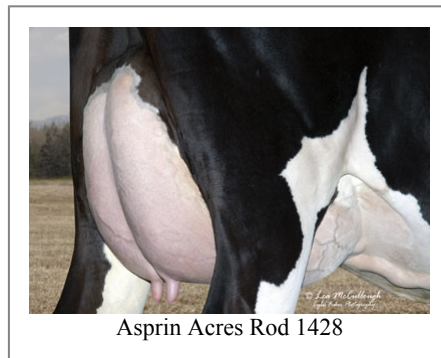


USDA SIRE GENOMIC EVALUATION Sire Summary - (08/10)

	91 Daus	61 Herds
Milk	793	92%R
Protein	28	0.02
Fat	35	0.02
Net Merit	\$115	
Fluid Merit	\$105	
Cheese Merit	\$133	

USDA SIRE GENOMIC EVALUATION Type Summary - (08/10)

	92 Daus	61 Herds		
PTAT	1.39	90%R	TPI	1558
UDC	0.64		FLC	1.99
Calving Ease	CE%	Rel	Calvings	
Service Sire	9%	91%	647	
Daughter	10%	78%	92	
Stillbirth	SB%	Rel	Calvings	
Service Sire	8.9%	74%	523	
Daughter	9.2%	71%	87	
PL	-1.2	79%	Milkout	Avg
SCS	3	86%	Disposition	Avg
DPR	-0.9	76%		
IB	6.1			



Information Provided By:

Accelerated Genetics®



E10890 Penny Lane
 Baraboo, WI. 52913
 1.800.451.9275 (toll free)
 608.356.8357 (local & international)
 info@accelgen.com
 www.accelgen.com

Holstein/USDA Genomic Linear Profile - August 2010

	-3	-2	-1	+1	+2	+3	
Stature				█		1.79	Tall
Strength				█		0.83	Strong
Body Depth				█		1.50	Deep
Dairy Form				█		2.22	Open Rib
Rump Angle			█			-0.65	High Pins
Thurl Width				█		0.59	Wide
Rear Leg Set			█			-0.15	Posty
Rear Leg Rear View				█		2.22	Straight
Foot Angle				█		2.40	Steep
Foot & Leg Score				█		1.98	High
Fore Attachments				█		0.72	Strong
Rear Udder Height				█		0.85	High
Rear Udder Width				█		2.28	Wide
Udder Cleft				█		0.92	Strong
Udder Depth			█			0.10	Shallow
Front Teat Placement			█			0.48	Close
Rear Teat Placement			█			0.58	Close
Teat Length				█		1.40	Long

