

# MAN-O-MAN - 014HO04929

O Man X Altaaron  
 HOUSA000135746776  
 Long-Langs Oman Oman-ET VG-85  
 aAa: 243165 DMS: 234



## USDA SIRE GENOMIC EVALUATION Sire Summary - (08/10)

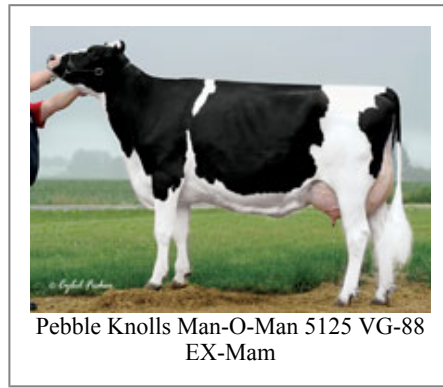
	106 Daus	66 Herds
Milk	1308	93%R
Protein	71	0.12
Fat	72	0.09
Net Merit	\$613	
Fluid Merit	\$501	
Cheese Merit	\$753	

## USDA SIRE GENOMIC EVALUATION Type Summary - (08/10)

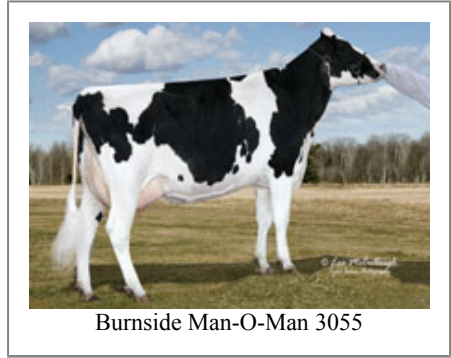
	102 Daus	63 Herds		
PTAT	1.73	91%R	TPI	2149
UDC	1.35		FLC	1.88

<b>Calving Ease</b>	<b>CE%</b>	<b>Rel</b>	<b>Calvings</b>
Service Sire	5%	88%	470
Daughter	7%	78%	90
<b>Stillbirth</b>	<b>SB%</b>	<b>Rel</b>	<b>Calvings</b>
Service Sire	6.8%	72%	398
Daughter	7.3%	70%	82

PL	2.1	80%	Milkout	Avg
SCS	2.9	87%	Disposition	Avg
DPR	0.5	77%		
IB	6			



Pebble Knolls Man-O-Man 5125 VG-88  
EX-Mam



Burnside Man-O-Man 3055

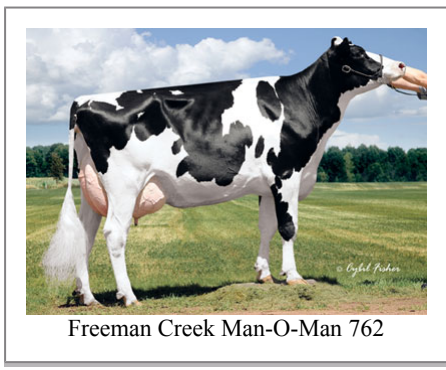
## Information Provided By:



E10890 Penny Lane  
 Baraboo, WI. 52913  
 1.800.451.9275 (toll free)  
 608.356.8357 (local & international)  
 info@accelgen.com  
 www.accelgen.com

## Holstein/USDA Genomic Linear Profile - August 2010

	-3	-2	-1	+1	+2	+3	
Stature						2.48	Tall
Strength						1.12	Strong
Body Depth						1.14	Deep
Dairy Form						1.27	Open Rib
Rump Angle						-0.09	High Pins
Thurl Width						1.92	Wide
Rear Leg Set						-1.08	Posty
Rear Leg Rear View						1.47	Straight
Foot Angle						2.74	Steep
Foot & Leg Score						1.74	High
Fore Attachments						0.69	Strong
Rear Udder Height						2.25	High
Rear Udder Width						2.22	Wide
Udder Cleft						2.11	Strong
Udder Depth						1.16	Shallow
Front Teat Placement						0.93	Close
Rear Teat Placement						1.38	Close
Teat Length						0.48	Long



Freeman Creek Man-O-Man 762



Freeman Creek Man-O-Man 762



DeJong Man-O-Man 211



Pebble-Knolls Man-O-Man 5125 GP-84



Desnayer ManOMan 6476



Schmitz Manoman B-19