

KRAMER - 014HO04924

O Man X Altahershel
 HOUSA000061802729
 Bomaz Oman Kramer 561-ET VG-85
 aAa: 234165 DMS: 234;345



USDA SIRE GENOMIC EVALUATION Sire Summary - (08/10)

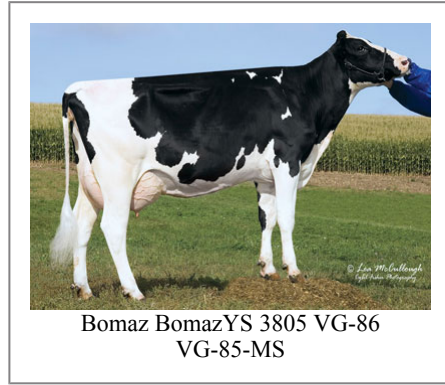
	79 Daus	57 Herds
Milk	1475	92%R
Protein	39	-0.02
Fat	60	0.02
Net Merit	\$504	
Fluid Merit	\$513	
Cheese Merit	\$497	

USDA SIRE GENOMIC EVALUATION Type Summary - (08/10)

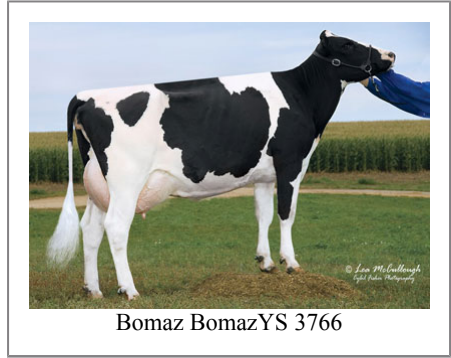
	78 Daus	56 Herds		
PTAT	1.34	90%R	TPI	1953
UDC	0.66		FLC	2.75

Calving Ease	CE%	Rel	Calvings
Service Sire	6%	95%	1696
Daughter	7%	77%	105
Stillbirth	SB%	Rel	Calvings
Service Sire	7%	79%	1009
Daughter	6.2%	70%	90

PL	3.6	79%	Milkout	Avg
SCS	2.85	85%	Disposition	> Avg
DPR	-0.8	75%		
IB	5.9			



Bomaz BomazYS 3805 VG-86
 VG-85-MS



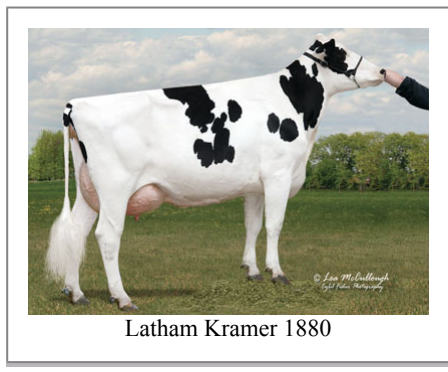
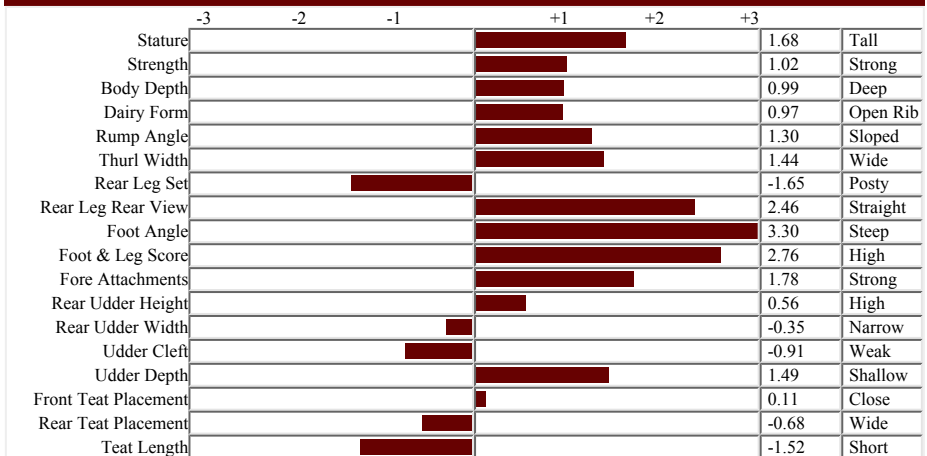
Bomaz BomazYS 3766

Information Provided By:

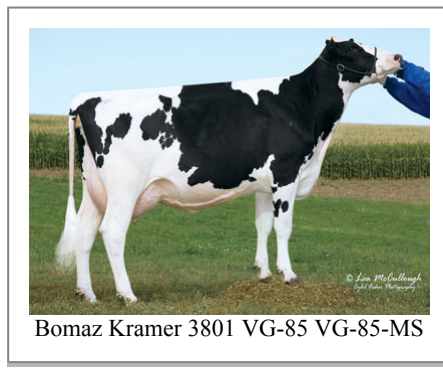


E10890 Penny Lane
 Baraboo, WI. 52913
 1.800.451.9275 (toll free)
 608.356.8357 (local & international)
 info@accelgen.com
 www.accelgen.com

Holstein/USA Genomic Linear Profile - August 2010



Latham Kramer 1880



Bomaz Kramer 3801 VG-85 VG-85-MS



Koval Bros Dairy Kramer 1235



Poeschel Kramer 38