

JAKE - 014HO04916

O Man X Bw Marshall
 HOUSA000061643016
 Lot-O-Rok Oman Jake-ET EX-91
 aAa: 354126 DMS: 345;135



USDA SIRE GENOMIC EVALUATION Sire Summary - (08/10)

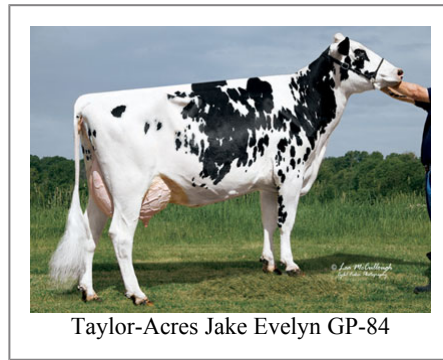
	68 Daus	50 Herds
Milk	1087	91%R
Protein	46	0.05
Fat	72	0.12
Net Merit	\$441	
Fluid Merit	\$395	
Cheese Merit	\$502	

USDA SIRE GENOMIC EVALUATION Type Summary - (08/10)

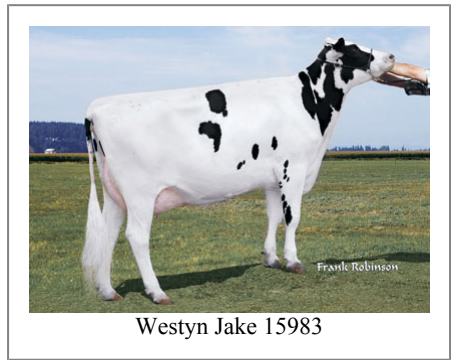
	69 Daus	50 Herds		
PTAT	0.78	89%R	TPI	1863
UDC	0.5		FLC	1.52

Calving Ease	CE%	Rel	Calvings
Service Sire	4%	98%	2515
Daughter	7%	77%	80
Stillbirth	SB%	Rel	Calvings
Service Sire	8.3%	92%	1567
Daughter	9.7%	70%	71

PL	1.1	78%	Milkout	Avg
SCS	2.94	84%	Disposition	Avg
DPR	0.1	75%		
IB	6.4			



Taylor-Acres Jake Evelyn GP-84



Westyn Jake 15983

Information Provided By:



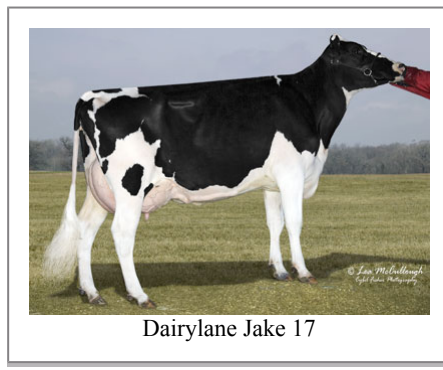
E10890 Penny Lane
 Baraboo, WI. 52913
 1.800.451.9275 (toll free)
 608.356.8357 (local & international)
 info@accelgen.com
 www.accelgen.com

Holstein/USA Genomic Linear Profile - August 2010

	-3	-2	-1	+1	+2	+3	
Stature						0.85	Tall
Strength						1.38	Strong
Body Depth						1.18	Deep
Dairy Form						0.09	Open Rib
Rump Angle						0.34	Sloped
Thurl Width						-0.42	Narrow
Rear Leg Set						-1.62	Posty
Rear Leg Rear View						1.75	Straight
Foot Angle						1.86	Steep
Foot & Leg Score						1.25	High
Fore Attachments						1.37	Strong
Rear Udder Height						0.58	High
Rear Udder Width						1.31	Wide
Udder Cleft						-1.06	Weak
Udder Depth						0.49	Shallow
Front Teat Placement						0.74	Close
Rear Teat Placement						-0.21	Wide
Teat Length						0.19	Long



Windmill-Hill 3107



Dairylane Jake 17



Dairyland Jake 17



Country-Aire Jake 5417