

KALAHARI - 014HO04878

Altafinley X Rubytom
HOUSA000061167016

Bomaz Kalahari 544-ET EX-90
aAa: 423165 DMS: 126;561



USDA SIRE GENOMIC EVALUATION Sire Summary - (08/10)

	106 Daus	69 Herds
Milk	611	94%R
Protein	11	-0.03
Fat	42	0.07
Net Merit	\$358	
Fluid Merit	\$405	
Cheese Merit	\$318	

USDA SIRE GENOMIC EVALUATION Type Summary - (08/10)

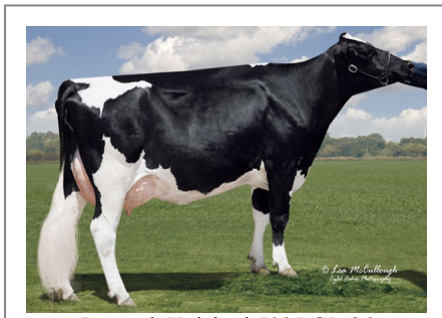
	99 Daus	66 Herds		
PTAT	1.91	91%R	TPI	1836
UDC	2.02		FLC	1.26

Calving Ease	CE%	Rel	Calvings
Service Sire	6%	96%	2046
Daughter	6%	79%	137
Stillbirth	SB%	Rel	Calvings
Service Sire	8.1%	80%	1324
Daughter	6%	71%	121

PL	3.2	81%	Milkout	> Avg
SCS	3.21	88%	Disposition	> Avg
DPR	1.1	78%		
IB	5.8			



Bomaz BomazYS 3834 VG-86
VG-88-MS



Jereczek Kalahari 5005 GP-86

Information Provided By:

Accelerated Genetics®



E10890 Penny Lane
Baraboo, WI. 52913

1.800.451.9275 (toll free)

608.356.8357 (local & international)

info@accelgen.com

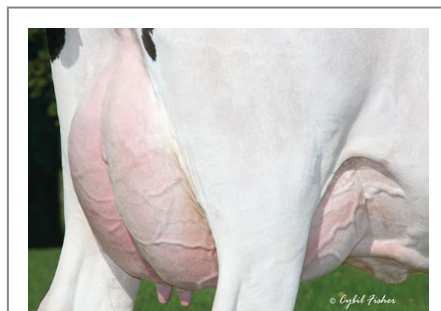
www.accelgen.com

Holstein/USDA Genomic Linear Profile - August 2010

	-3	-2	-1	+1	+2	+3	
Stature						0.77	Tall
Strength						0.19	Strong
Body Depth						0.52	Deep
Dairy Form						1.52	Open Rib
Rump Angle						-0.40	High Pins
Thurl Width						2.05	Wide
Rear Leg Set						0.14	Sickle
Rear Leg Rear View						0.98	Straight
Foot Angle						1.48	Steep
Foot & Leg Score						1.46	High
Fore Attachments						3.19	Strong
Rear Udder Height						1.68	High
Rear Udder Width						2.04	Wide
Udder Cleft						1.78	Strong
Udder Depth						2.22	Shallow
Front Teat Placement						2.02	Close
Rear Teat Placement						1.64	Close
Teat Length						-1.36	Short



Elmhorst Kalahari 301



Elmhorst Kalahari 301



Bomaz BomazYS 3761-TW GP-83



Bailie Kalahari 3380



Thulls Kalahari 1529 GP-80