

# PAXTON - 014HO04876

O Man X Rudolph  
 HOUSA000135393745  
 All-Riehl Paxton-ET  
 aAa: 213456 DMS: 345



## USDA SIRE GENOMIC EVALUATION Sire Summary - (08/10)

	94 Daus	69 Herds
Milk	689	92%R
Protein	31	0.04
Fat	23	-0.01
Net Merit	\$433	
Fluid Merit	\$375	
Cheese Merit	\$493	

## USDA SIRE GENOMIC EVALUATION Type Summary - (08/10)

	79 Daus	61 Herds		
PTAT	0.69	90%R	TPI	1878
UDC	0.27		FLC	0.69

<b>Calving Ease</b>	<b>CE%</b>	<b>Rel</b>	<b>Calvings</b>
Service Sire	6%	91%	692
Daughter	6%	78%	107
<b>Stillbirth</b>	<b>SB%</b>	<b>Rel</b>	<b>Calvings</b>
Service Sire	7.6%	75%	556
Daughter	6.6%	71%	91

PL	3.3	80%	Milkout	Avg
SCS	2.73	86%	Disposition	Avg
DPR	3	77%		
IB	5.9			



Vellma Farms Paxton Brandi GP-82



Donamara Paxton Sedona

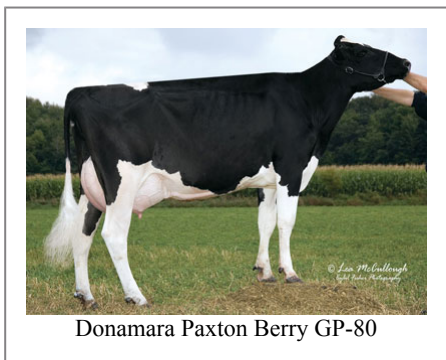
## Information Provided By:



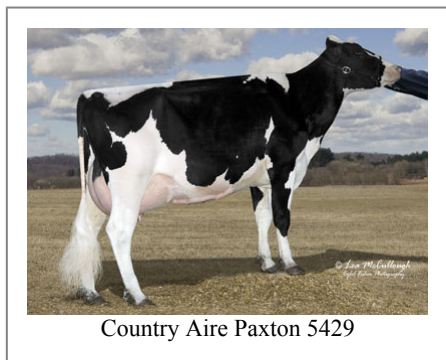
E10890 Penny Lane  
 Baraboo, WI. 52913  
 1.800.451.9275 (toll free)  
 608.356.8357 (local & international)  
 info@accelgen.com  
 www.accelgen.com

## Holstein/USDA Genomic Linear Profile - August 2010

	-3	-2	-1	+1	+2	+3	
Stature							2.74 Tall
Strength							1.69 Strong
Body Depth							1.29 Deep
Dairy Form							-0.15 Tight Rib
Rump Angle							3.78 Sloped
Thurl Width							-0.65 Narrow
Rear Leg Set							-0.33 Posty
Rear Leg Rear View							0.49 Straight
Foot Angle							1.22 Steep
Foot & Leg Score							0.56 High
Fore Attachments							0.88 Strong
Rear Udder Height							0.69 High
Rear Udder Width							-0.22 Narrow
Udder Cleft							-2.11 Weak
Udder Depth							1.42 Shallow
Front Teat Placement							-1.11 Wide
Rear Teat Placement							-1.93 Wide
Teat Length							-0.82 Short



Donamara Paxton Berry GP-80



Country Aire Paxton 5429