

# STELLAR - 014HO04816

Champion X Bw Marshall  
 HOUSA000060897317  
 Crave Champion Stellar 23 VG-88  
 aAa: 216345 DMS: 126;123

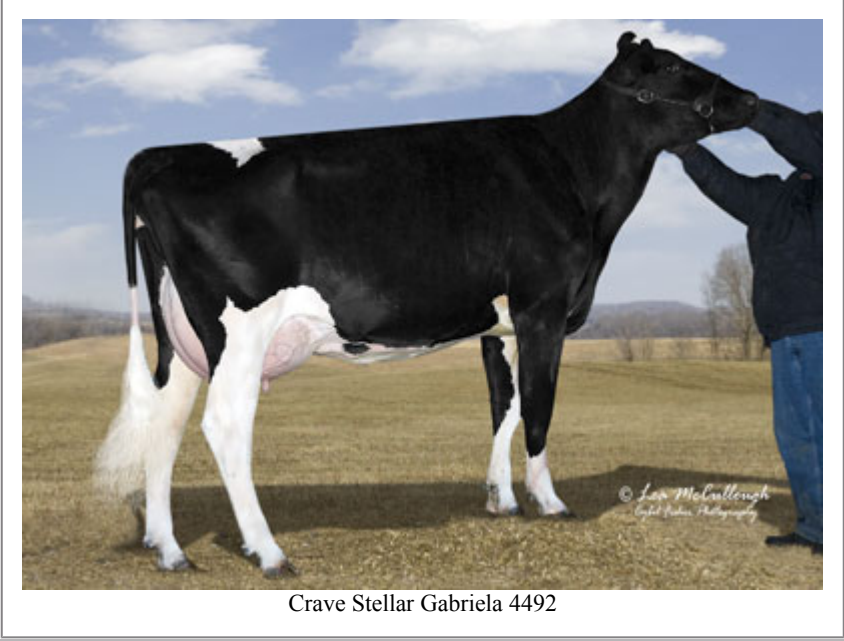


### USDA SIRE GENOMIC EVALUATION Sire Summary - (08/10)

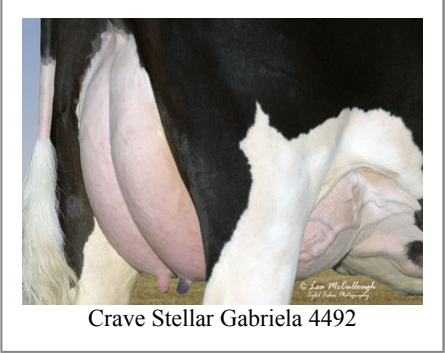
	99 Daus	59 Herds
Milk	1318	93%R
Protein	35	-0.02
Fat	31	-0.06
Net Merit	\$47	
Fluid Merit	\$70	
Cheese Merit	\$32	

### USDA SIRE GENOMIC EVALUATION Type Summary - (08/10)

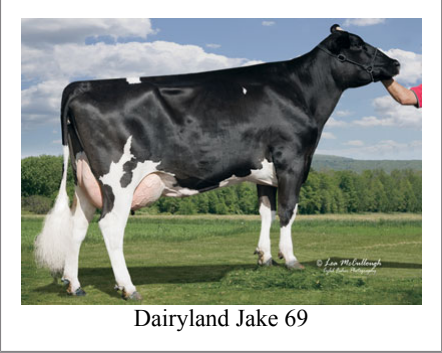
	90 Daus	53 Herds		
PTAT	1.07	90%R	TPI	1461
UDC	-0.07		FLC	0.71
<b>Calving Ease</b>	<b>CE%</b>	<b>Rel</b>	<b>Calvings</b>	
Service Sire	5%	92%	960	
Daughter	6%	79%	93	
<b>Stillbirth</b>	<b>SB%</b>	<b>Rel</b>	<b>Calvings</b>	
Service Sire	7.6%	80%	808	
Daughter	8.3%	72%	81	
PL	-2.4	80%	Milkout	> Avg
SCS	3.03	87%	Disposition	Avg
DPR	-1.4	77%		
IB	5.8			



Crave Stellar Gabriela 4492



Crave Stellar Gabriela 4492



Dairyland Jake 69

### Information Provided By:



E10890 Penny Lane  
 Baraboo, WI. 52913  
 1.800.451.9275 (toll free)  
 608.356.8357 (local & international)  
 info@accelgen.com  
 www.accelgen.com

Holstein/USDA Genomic Linear Profile - August 2010							
	-3	-2	-1	+1	+2	+3	
Stature						3.11	Tall
Strength						1.43	Strong
Body Depth						2.73	Deep
Dairy Form						3.74	Open Rib
Rump Angle						2.33	Sloped
Thurl Width						1.04	Wide
Rear Leg Set						-0.33	Posty
Rear Leg Rear View						0.71	Straight
Foot Angle						0.56	Steep
Foot & Leg Score						0.84	High
Fore Attachments						-0.80	Loose
Rear Udder Height						0.46	High
Rear Udder Width						1.22	Wide
Udder Cleft						1.32	Strong
Udder Depth						-0.73	Deep
Front Teat Placement						0.07	Close
Rear Teat Placement						0.58	Close
Teat Length						1.46	Long

