

# CHAMP - 014HO04766

Champion X Altaformation  
 HOUSA000135056079  
 Roylane Champion Champ-ET GP-84  
 aAa: 342561 DMS: 561;135



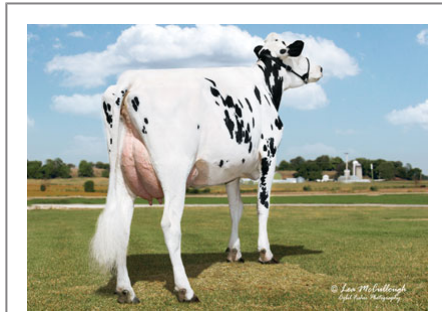
## USDA SIRE GENOMIC EVALUATION Sire Summary - (08/10)

	153 Daus	75 Herds
Milk	1416	94%R
Protein	32	-0.04
Fat	47	-0.02
Net Merit	\$460	
Fluid Merit	\$479	
Cheese Merit	\$434	

## USDA SIRE GENOMIC EVALUATION Type Summary - (08/10)

	123 Daus	69 Herds		
PTAT	1.5	92%R	TPI	1883
UDC	1.28		FLC	0.79
<b>Calving Ease</b>	<b>CE%</b>	<b>Rel</b>	<b>Calvings</b>	
Service Sire	5%	96%	2353	
Daughter	5%	80%	179	
<b>Stillbirth</b>	<b>SB%</b>	<b>Rel</b>	<b>Calvings</b>	
Service Sire	6.5%	84%	1726	
Daughter	6.3%	71%	138	

PL	2.6	82%	Milkout	> Avg
SCS	2.75	89%	Disposition	Avg
DPR	-0.2	79%		
IB	5.9			



Tamarack-Valley Champ Caitlin GP-83



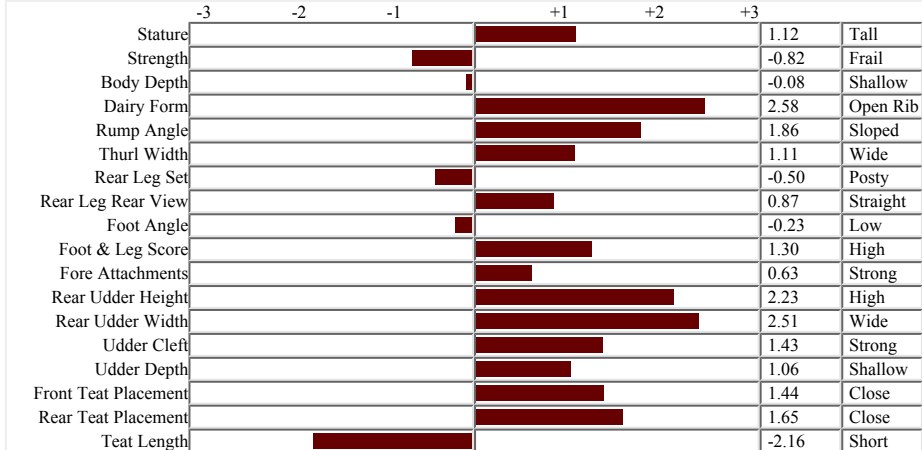
2nd Lactation: Fox Ridge Champ 2363 VG-85

## Information Provided By:

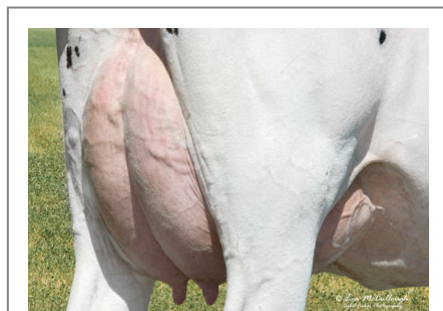


E10890 Penny Lane  
 Baraboo, WI. 52913  
 1.800.451.9275 (toll free)  
 608.356.8357 (local & international)  
 info@accelgen.com  
 www.accelgen.com

## Holstein/USDA Genomic Linear Profile - August 2010



Dellen Champ Judy GP-81



Tamarack-Valley Champ Caitlin



Bailie Champ 3333



Valley View Champ 2197



Tamarack-Valley Champ Caitlin GP-83