

# PHIL G - 014HO04670

Pippen X Rudolph  
 HOUSA000134592413  
 L-L-M-Dairy Phil G-ET VG-85  
 aAa: 162534 DMS: 135;561



### USDA SIRE GENOMIC EVALUATION Sire Summary - (08/10)

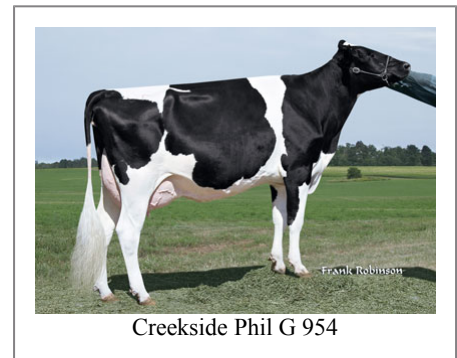
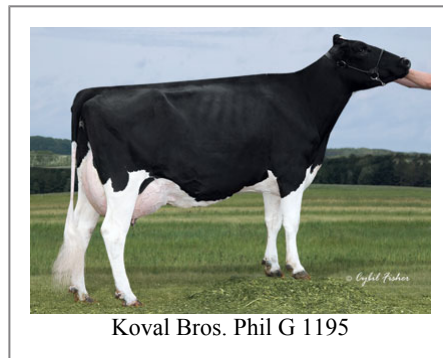
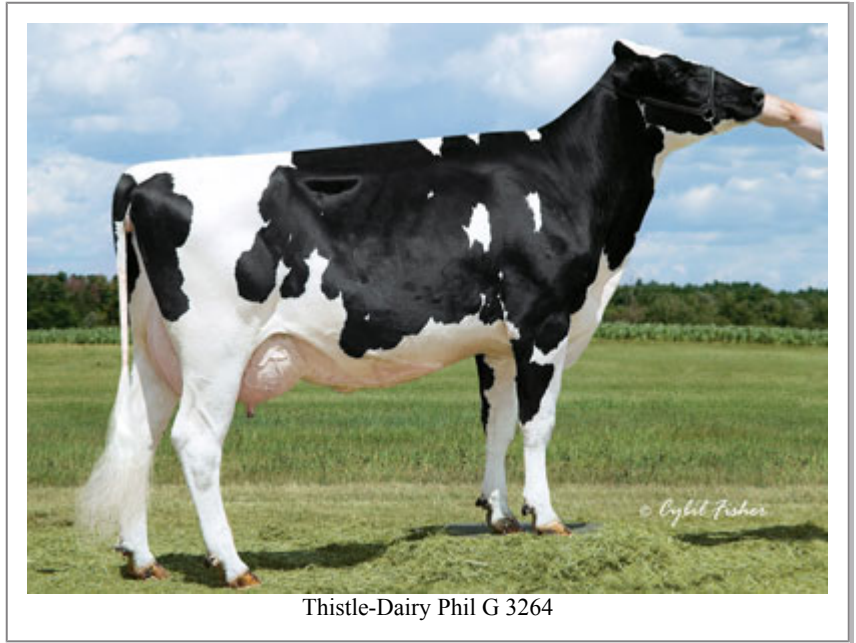
	115 Daus	67 Herds
Milk	804	93%R
Protein	20	-0.02
Fat	30	0
Net Merit	\$331	
Fluid Merit	\$328	
Cheese Merit	\$329	

### USDA SIRE GENOMIC EVALUATION Type Summary - (08/10)

	103 Daus	63 Herds		
PTAT	1.17	91%R	TPI	1743
UDC	1.51		FLC	1.05

<b>Calving Ease</b>	<b>CE%</b>	<b>Rel</b>	<b>Calvings</b>
Service Sire	7%	99%	3441
Daughter	9%	78%	143
<b>Stillbirth</b>	<b>SB%</b>	<b>Rel</b>	<b>Calvings</b>
Service Sire	7.8%	95%	2696
Daughter	9%	71%	115

PL	3.2	81%	Milkout	Avg
SCS	2.8	87%	Disposition	Avg
DPR	-0.8	77%		
IB	5.5			



### Information Provided By:

**Accelerated Genetics®**



E10890 Penny Lane  
 Baraboo, WI. 52913  
 1.800.451.9275 (toll free)  
 608.356.8357 (local & international)  
 info@accelgen.com  
 www.accelgen.com

Holstein/USDA Genomic Linear Profile - August 2010	
	-3   -2   -1   +1   +2   +3
Stature	0.35 Tall
Strength	-0.10 Frail
Body Depth	-0.29 Shallow
Dairy Form	0.07 Open Rib
Rump Angle	-0.04 High Pins
Thurl Width	0.73 Wide
Rear Leg Set	-0.22 Posty
Rear Leg Rear View	0.60 Straight
Foot Angle	0.80 Steep
Foot & Leg Score	1.47 High
Fore Attachments	2.10 Strong
Rear Udder Height	1.30 High
Rear Udder Width	1.73 Wide
Udder Cleft	1.30 Strong
Udder Depth	1.71 Shallow
Front Teat Placement	1.76 Close
Rear Teat Placement	1.65 Close
Teat Length	-1.23 Short



Milking-It-Dairy Phil G