

ONWARD - 014HO04511

Morty X Outside
 HOUSA000134361093
 Andacres Morty Onward VG-88
 aAa: 423651 DMS: 234;246



USDA SIRE GENOMIC EVALUATION Sire Summary - (08/10)

	89 Daus	62 Herds
Milk	1261	92%R
Protein	29	-0.03
Fat	61	0.05
Net Merit	\$285	
Fluid Merit	\$317	
Cheese Merit	\$254	

USDA SIRE GENOMIC EVALUATION Type Summary - (08/10)

	83 Daus	55 Herds		
PTAT	1.63	90%R	TPI	1729
UDC	1.55		FLC	1.01

Calving Ease	CE%	Rel	Calvings
Service Sire	10%	99%	5225
Daughter	10%	78%	110
Stillbirth	SB%	Rel	Calvings
Service Sire	7.3%	96%	4528
Daughter	6.4%	69%	72

PL	-0.3	80%	Milkout	> Avg
SCS	2.96	86%	Disposition	> Avg
DPR	-0.7	76%		
IB	6.1			



Nankey Onward Ally



2nd Lactation: Roehl-Acres Loyal Limo VG-85

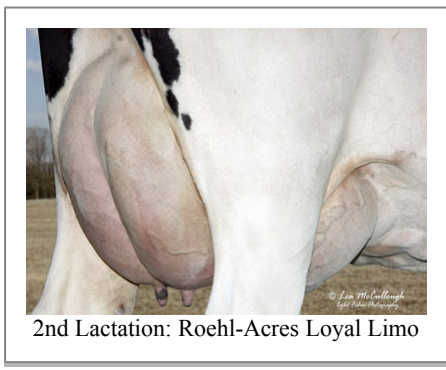
Information Provided By:



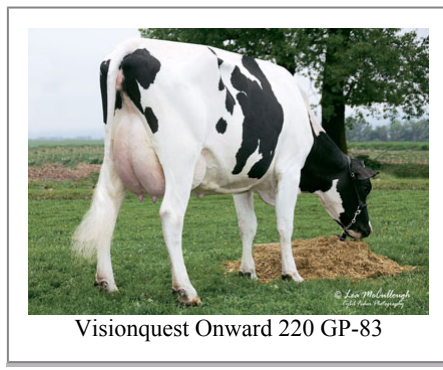
E10890 Penny Lane
 Baraboo, WI. 52913
 1.800.451.9275 (toll free)
 608.356.8357 (local & international)
 info@accelgen.com
 www.accelgen.com

Holstein/USDA Genomic Linear Profile - August 2010

	-3	-2	-1	+1	+2	+3	
Stature						1.28	Tall
Strength						1.45	Strong
Body Depth						0.98	Deep
Dairy Form						0.93	Open Rib
Rump Angle						0.94	Sloped
Thurl Width						1.63	Wide
Rear Leg Set						-1.91	Posty
Rear Leg Rear View						0.53	Straight
Foot Angle						1.42	Steep
Foot & Leg Score						0.86	High
Fore Attachments						1.50	Strong
Rear Udder Height						3.75	High
Rear Udder Width						4.68	Wide
Udder Cleft						0.66	Strong
Udder Depth						0.24	Shallow
Front Teat Placement						0.63	Close
Rear Teat Placement						0.57	Close
Teat Length						1.39	Long



2nd Lactation: Roehl-Acres Loyal Limo



Visionquest Onward 220 GP-83



Visionquest Onward 216



2nd Lactation: DeJong Onward 1599



Zuppan Onward 2037



Gold Dust 7230