

HARRY - 014HO03913

Bw Marshall X Celsius
HOUSA000060083723

Walhowdon Marshall Harry-ET EX-95
aAa: 234165 DMS: 126;246

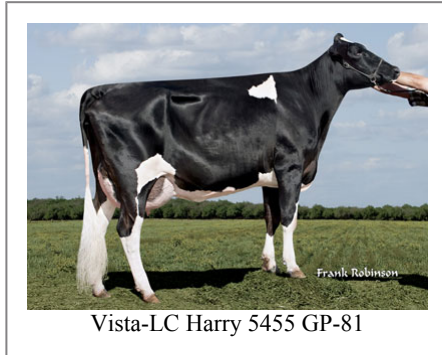


IB/MACE-USA Sire Summary - (08/10)

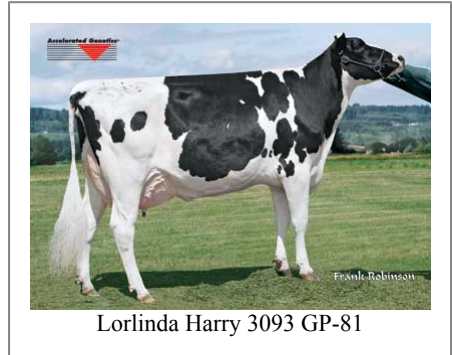
	7538 Daus	2151 Herds
Milk	1317	99%R
Protein	44	0.02
Fat	26	-0.08
Net Merit	\$-4	
Fluid Merit	\$-4	
Cheese Merit	\$12	

IB/MACE-USA Type Summary - (08/10)

	1870 Daus	891 Herds		
PTAT	1.43	98%R	TPI	1469
UDC	1.17		FLC	1.82
Calving Ease	CE%	Rel	Calvings	
Service Sire	7%	99%	18929	
Daughter	9%	97%	0	
Stillbirth	SB%	Rel	Calvings	
Service Sire	7.4%	98%	14655	
Daughter	16.9%	97%	0	
PL	-2.3	95%	Milkout	Avg
SCS	3.1	99%	Disposition	Avg
DPR	-3.3	97%		
IB	6.1			



Vista-LC Harry 5455 GP-81



Lorlinda Harry 3093 GP-81

Information Provided By:



E10890 Penny Lane
Baraboo, WI. 52913
1.800.451.9275 (toll free)
608.356.8357 (local & international)
info@accelgen.com
www.accelgen.com

Holstein/USA Genomic Linear Profile - August 2010

	-3	-2	-1	+1	+2	+3	
Stature						2.06	Tall
Strength						1.17	Strong
Body Depth						0.97	Deep
Dairy Form						0.97	Open Rib
Rump Angle						2.13	Sloped
Thurl Width						0.14	Wide
Rear Leg Set						-1.30	Posty
Rear Leg Rear View						1.76	Straight
Foot Angle						2.65	Steep
Foot & Leg Score						1.53	High
Fore Attachments						2.37	Strong
Rear Udder Height						1.26	High
Rear Udder Width						2.28	Wide
Udder Cleft						0.10	Strong
Udder Depth						0.83	Shallow
Front Teat Placement						0.76	Close
Rear Teat Placement						0.69	Close
Teat Length						2.88	Long



Left: Lorlinda Harry 3021 GP-81 Right: Lorlinda Harry 3009 GP-81



Left: Ruchi Harry 806 Right: Wiedenfeld Harry W780



Weise Harry 2663



Lorlinda Harry 3009 GP-81



Weise Harry 2663