

MARION - 014HO03831

Addison X Altaformation
 HOUSA000130153294
 Veazland Marion-ET EX-93
 aAa: 312465 DMS: 345;135

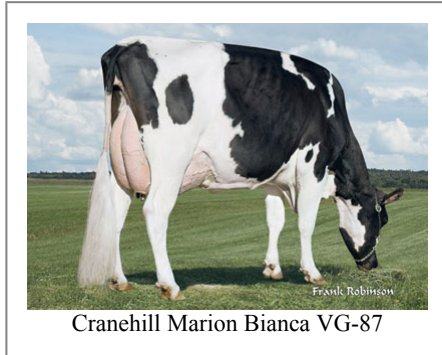


IB/MACE-USA Sire Summary - (08/10)

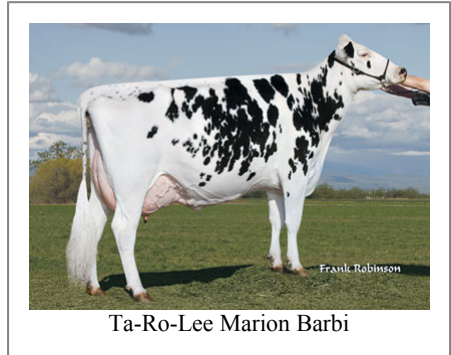
	15159 Daus	5202 Herds
Milk	2543	99%R
Protein	53	-0.09
Fat	57	-0.13
Net Merit	\$218	
Fluid Merit	\$307	
Cheese Merit	\$130	

IB/MACE-USA Type Summary - (08/10)

	7437 Daus	3330 Herds		
PTAT	0.85	99%R	TPI	1634
UDC	0.53		FLC	0.55
Calving Ease	CE%	Rel	Calvings	
Service Sire	9%	99%	32243	
Daughter	9%	98%	0	
Stillbirth	SB%	Rel	Calvings	
Service Sire	7.4%	99%	26828	
Daughter	7.8%	98%	0	
PL	-1.3	98%	Milkout	Avg
SCS	3	99%	Disposition	Quiet
DPR	-2.3	98%		
IB	5.4			



Cranehill Marion Bianca VG-87



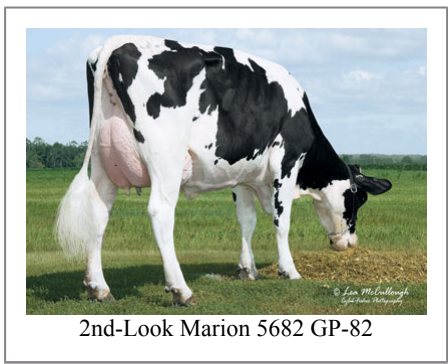
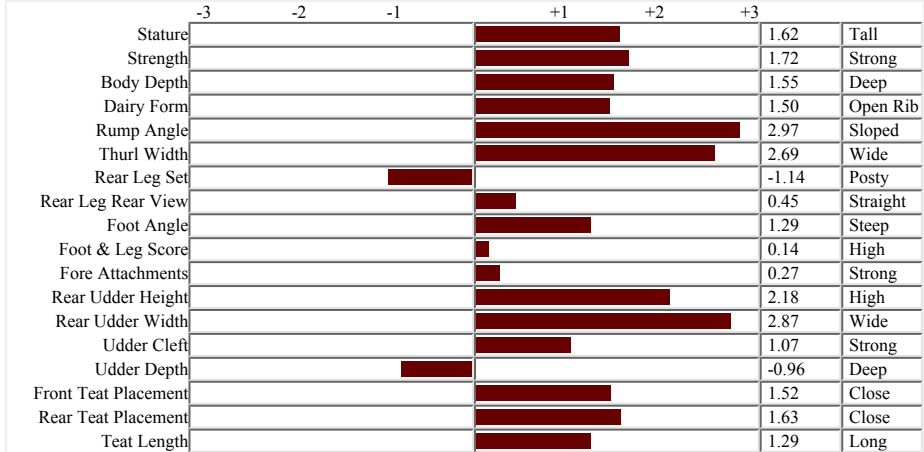
Ta-Ro-Lee Marion Barbi

Information Provided By:

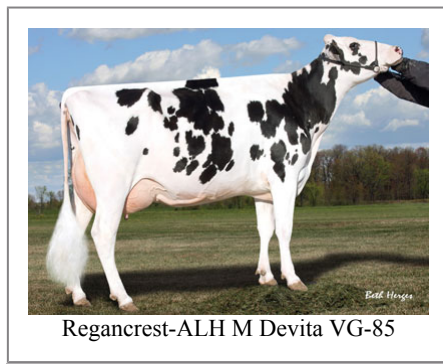


E10890 Penny Lane
 Baraboo, WI. 52913
 1.800.451.9275 (toll free)
 608.356.8357 (local & international)
 info@accelgen.com
 www.accelgen.com

Holstein/USA Genomic Linear Profile - August 2010



2nd-Look Marion 5682 GP-82



Regancrest-ALH M Devita VG-85



2nd Lactation: Longrow Marion April EX-90 EX-90-MS



Welcome Marion Winn-ET VG-88



Kemtway Marion Risky VG-88



Sildahl Marion Advisor