

MATT - 014HO03738

Mtoto X Hunter
 HOUSA000129766481
 Barbi-Lyn M Mattison-ET VG-89
 aAa: 312456 DMS: 345;135



IB/MACE-USA Sire Summary - (08/10)

	4916 Daus	1144 Herds
Milk	1017	99%R
Protein	14	-0.06
Fat	15	-0.08
Net Merit	\$69	
Fluid Merit	\$111	
Cheese Merit	\$14	

IB/MACE-USA Type Summary - (08/10)

	1071 Daus	493 Herds		
PTAT	1.22	98%R	TPI	1460
UDC	0.78		FLC	0.17

Calving Ease	CE%	Rel	Calvings
Service Sire	6%	99%	16371
Daughter	6%	97%	0
Stillbirth	SB%	Rel	Calvings
Service Sire	9.6%	98%	12474
Daughter	6.9%	97%	0

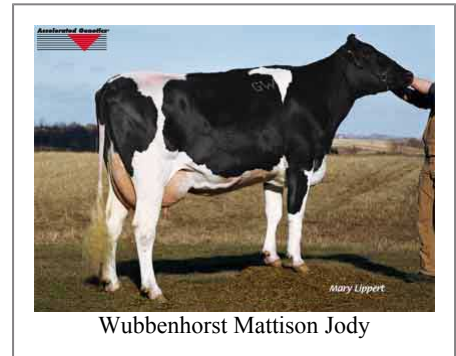
PL	-2.1	95%	Milkout	Slow
SCS	2.79	99%	Disposition	Avg
DPR	-0.1	96%		
IB	6.5			



Country-Aire Matt 5330



Jemdale Matt 979



Wubbenhorst Mattison Jody

Information Provided By:

Accelerated Genetics®



E10890 Penny Lane
 Baraboo, WI. 52913
 1.800.451.9275 (toll free)
 608.356.8357 (local & international)
 info@accelgen.com
 www.accelgen.com

Holstein/USDA Genomic Linear Profile - August 2010

	-3	-2	-1	+1	+2	+3	
Stature						1.10	Tall
Strength						1.29	Strong
Body Depth						1.29	Deep
Dairy Form						1.37	Open Rib
Rump Angle						0.90	Sloped
Thurl Width						1.85	Wide
Rear Leg Set						0.39	Sickle
Rear Leg Rear View						-0.08	Hock-in
Foot Angle						0.29	Steep
Foot & Leg Score						0.29	High
Fore Attachments						1.05	Strong
Rear Udder Height						1.37	High
Rear Udder Width						1.99	Wide
Udder Cleft						2.70	Strong
Udder Depth						-0.23	Deep
Front Teat Placement						1.94	Close
Rear Teat Placement						2.49	Close
Teat Length						-0.02	Short

