

HUDSON - 014GU00297

Fortress X Velour
 GUUSA000000604713
 Jens Gold Fort Hudson
 aAa: 216345 DMS: 123

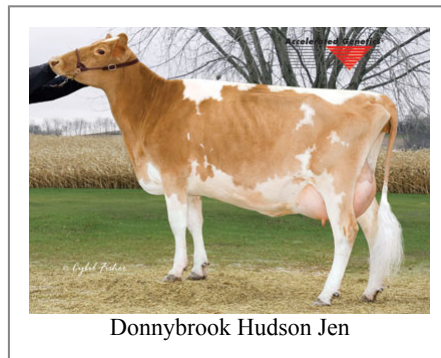


USDA SIRE EVALUATION Sire Summary - (08/10)

	70 Daus	42 Herds		
Milk	1046	85%R		
Protein	30	-0.02		
Fat	19	-0.15		
Net Merit	\$108			
Fluid Merit	\$117			
Cheese Merit	\$106			

USDA SIRE EVALUATION Type Summary - (08/10)

	43 Daus	30 Herds		
PTAT	0.3	80%R	PTI	99
UDC	-0.6		FLC	1.8
PL	-0.2	61%		
SCS	3.07	72%		
DPR	-0.2	52%		
IB	6.9			



Information Provided By:



E10890 Penny Lane
 Baraboo, WI. 52913
 1.800.451.9275 (toll free)
 608.356.8357 (local & international)
 info@accelgen.com
 www.accelgen.com

AGCC Linear Profile - August 2010

	-3	-2	-1	+1	+2	+3	
Stature						1.50	Tall
Strength						0.70	Strong
Body Depth						1.60	Deep
Dairy Form						2.00	Open Rib
Rump Angle						0.70	Sloped
Thurl Width						0.60	Wide
Rear Leg Set						-0.70	Posty
Rear Leg Rear View						1.70	Straight
Foot Angle						0.20	Steep
Fore Attachments						-2.00	Loose
Rear Udder Height						-0.10	Low
Rear Udder Width						0.50	Wide
Udder Cleft						0.90	Strong
Udder Depth						-1.70	Deep
Front Teat Placement						-1.30	Wide
Teat Length						1.10	Long

