

COOPERATIVE NEWS

Accelerated Genetics®



VOLUME 1 ISSUE 1

Welcome to Accelerated Genetics' first 'Cooperative News'. This publication was designed specifically for **YOU**, Accelerated Genetics' Cooperative Members. In this issue you will learn about the special programs that are available to **YOU** at Accelerated Genetics!

Brian Brown, Accelerated Genetics Chair of the Board of Directors, states, "I view Accelerated Genetics as a progressive, people-oriented cooperative. As a cooperative, they bring forth new technologies and ideas, share this information with producers and essentially help make the farm operations more successful."

YOU can be part of the Vision, Direction and Future of Accelerated Genetics! Join in the 'Cooperative Spirit' and participate in Accelerated Genetics' cooperative activities!



Accelerated Genetics Board of Director team for 2008-09 are seated, Dennis Bell, Doug Thesing, Brian Brown, Carol Anderson, and Rick Carlson. Standing is Pete Kirchner, Gary Eibergen, Dave Score, John Pronschinske, and John McClelland, Jr.

ADMINISTRATIVE HEADQUARTERS

E10890 Penny Lane
Baraboo, WI 53913
1.800.451.9275 • 608.356.8357
Fax: 608.356.4387
Email: info@accelgen.com
Website: www.accelgen.com

ACCELERATED GENETICS BOARD AND OFFICERS

Chair of the Board:

Brian Brown

Belleville, WI - District 8

First Vice Chair:

Dave Score

Boyceville, WI - District 1

Second Vice Chair:

Gary Eibergen

Granton, WI - District 3

Secretary/Treasurer:

Doug Thesing

Winona, MN - District 10

John Pronschinske

Arcadia, WI - District 2

Carol Anderson

Whitehall, WI - District 4

John McClelland, Jr.

Viroqua, WI - District 5

Dennis Bell

Gays Mills, WI - District 6

Rick Carlson

Hollandale, WI - District 7

Pete Kirchner

Clintonville, WI - District 9

President & CEO:

Joel Groskreutz

**Join In The
Cooperative Spirit
At
Accelerated Genetics!**



County Division Meetings

- 11:45 a.m. Registration Begins
 NOON (Sharp) Producer Appreciation Meal
- Cooperative Activities Update
 - Financial Report
 - Genomics 101
 - Delegate Election for Local Representation
 - Door Prizes
- 2:30 p.m. Meeting Adjourns

2008 County Division Meeting Schedule

DATE:	COUNTY GROUP:	LOCATION:
Dec. 1	Vernon/Crawford	Firehouse Restaurant - Viroqua, Wis.
Dec. 2	Burnett/Pierce/Polk/St. Croix Brown/Oconto/Outagamie/Shawano	The Coachman - Baldwin, Wis. The Gathering - Shawano, Wis.
Dec. 3	Chippewa/Eau Claire/Rusk Portage/Waupaca/Waushara/Winnebago	Holiday Inn Campus Area - Eau Claire, Wis. Hahn-a-lula Resort - Fremont, Wis.
Dec. 4	Barron/Dunn/Washburn Iowa/Lafayette	Old Town Conference Center - Menomonie, Wis. The Comfort Inn - Mineral Point, Wis.
Dec. 8	Houston Lincoln/Marathon/Wood	Good Times - Caledonia, Minn. Knights of Columbus Hall - Marshfield, Wis.
Dec. 9	Northeast Iowa Counties Clark/Taylor	Northeast Iowa Community College - Calmar, Iowa St. Mary's Hall - Greenwood, Wis.
Dec. 10	Buffalo/Pepin Green/JoDavies, III./McHenry, III./Stephenson, III.	Club 10 - Durand, Wis. Turner Hall - Monroe, Wis.
Dec. 11	Dane Ozaukee/Sheboygan/Washington	Fitzgerald's - Middleton, Wis. Chissy's - Waldo, Wis.
Dec. 15	Grant LaCrosse/Monroe	Eagle Creek Inn - Fennimore, Wis. Colonial Banquet Center - Sparta, Wis.
Dec. 16	Jackson/Trempealeau Adams/Columbia/Green Lake/Juneau/Marquette/Sauk	Club 95 - Hixton, Wis. The Farm Kitchen - Baraboo, Wis.
Dec. 17	Dodge/Fond du Lac Richland	Rock River Country Club - Waupun, Wis. Ramada Inn-Whitehouse - Richland Center, Wis.
Dec. 19	Fillmore/Winona Jefferson/Kenosha/Racine/Rock/Walworth/Waukesha	LA Lanes - Lewiston, Minn. Randy's - Whitewater, Wis.

To Register, Please Fill Out And Return The 2008 County Meeting RSVP Card Located On Pages 3-4.

*It's all about **YOU**...
Because **YOU** are important to
Accelerated Genetics.*

✓ **YOU** work hard to achieve the
highest standard of excellence
in your business.

✓ **YOU** rely on industry
professionals like the ones from
Accelerated Genetics.

✓ We feel **YOU** are very important
to our cooperative's strength and are
focused on your needs.

✓ We want to **THANK YOU** by
inviting **YOU** to attend your annual
County Division Meeting and
Producer Appreciation Meal.

ATTEND TO WIN!

When **YOU** attend your local
County Division Meeting
you will be eligible for
some exciting Door Prizes!

Plus, one person from each
meeting will be included in
the **Grand Prize Drawings:**

1ST Prize:

\$300 Scholarship to attend
the 2009 PDPW Business
Conference

2ND Prize:

GPS Navigation System



RSVP For Your 2008 COUNTY DIVISION MEETING

Please reserve _____ meals for:
(# of meals)

(Farm & Owner Names)

at the County Annual Meeting to be held at:

(Meal Date)

(Meal Location & City)

Please RSVP at least 5 Days prior to your meeting!

You Can Be Part Of The Elected Cooperative Structure

Who are Accelerated Genetics' Delegates?

Delegates are selected from each county unit. One delegate will represent 20 members. Delegates are nominated at the Fall Delegate Meetings. Elections are then held to elect the delegates at the County Division Meetings in December.

What do Delegates do for Accelerated Genetics?

Elected delegates are asked to attend three meetings throughout a year. These meetings are held so the delegates can provide input and feedback to the cooperative. The objective is provide customers with the best service and products...and what better way to get that information than to have our customers as Delegates.

Who are Accelerated Genetics' County Chairs?

County Chairs are the head of each county unit (some smaller counties join together to make a unit). There are 32 County Chairs in the membership area for Accelerated Genetics.

What do County Chairs do for Accelerated Genetics?

County Chairs are elected at the Spring Delegate Meetings. They are asked to attend the same three meetings as the Delegates, plus participate in one joint brainstorming session in March with the Board of Directors and Accelerated Genetics' management.

Who Elects the Board of Directors?

The Delegates elect a Director from each local District at the Fall Delegate Meetings. There are 10 Board of Directors. Each of the board members has an assigned district which combines county units based on membership and location. Each board member serves a three-year term. There is a maximum of a 12-year tenure.

What is a Board members' role?

The Board of Directors hire and supervise the President & CEO of Accelerated Genetics. The board also set a vision and future direction for the company as well as set policy for the cooperative.



NO POSTAGE
NECESSARY
IF MAILED
IN THE
UNITED STATES

BUSINESS REPLY MAIL

FIRST-CLASS MAIL PERMIT NO. 116 BARABOO, WI

POSTAGE WILL BE PAID BY ADDRESSEE

JANET KELLER
ACCELERATED GENETICS
E10890 PENNY LN
BARABOO WI 53913-9939



Herd Recognition Program

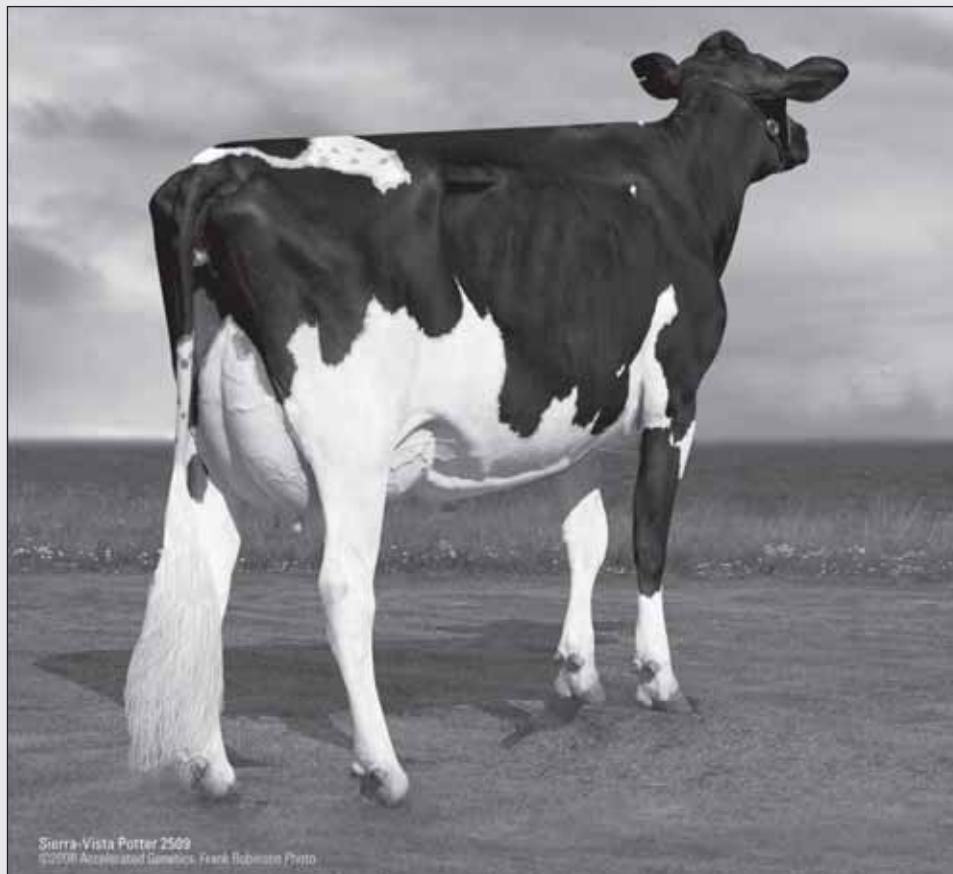
The **Herd Recognition Program** honors Accelerated Genetics cooperative members who have excelled in production with their herd. Accelerated Genetics is proud to offer this award program to producers who qualify.

QUALIFICATIONS:

Herds that have a Combined Fat and Protein (CFP) level of 1400 pounds and above on their December 2008 test sheet are eligible to apply for the **Herd Recognition Program**. Additionally, herds must be at least 75 percent Accelerated Genetics' sired.

Qualifying herds will be invited to attend a **2009 Regional Herd Recognition Banquet**. At the banquet, they will receive special recognition and an award, enjoy other producers' company, and listen to an educational presentation on the topic of Genomics!

This year's **Herd Recognition Program** will also include special acknowledgement to herds that participate in the PACE young sire program and the GEMpc mating program. **To apply for the Herd Recognition Program, fill out and return the application form on Page 6.**



2009 Herd Recognition Award Application

NAME: _____

ADDRESS: _____

CITY: _____ STATE: _____ ZIP: _____

PHONE: _____ EMAIL: _____

COUNTY: _____ BREED(s): _____

Are you an Active Accelerated Genetics member? YES NO

Are you a PACE young sire herd? YES NO

Do you use the GEMpc mating service? YES NO

How many years have you received the Herd Recognition Award award? _____

OR Are you a New Herd Recognition Applicant? YES

Number of milkings per day? 2X 3X

Type of testing system? Official Unofficial

ACTUAL ROLLING HERD AVERAGE AS OF DECEMBER 2008: (Be complete and accurate.)

Minimum to qualify: 1400 pounds Combined Fat and Protein (CFP)

Number of Cows: _____ Pounds Milk: _____

% Fat: _____ Fat (lbs.): _____ % Protein: _____ Protein (lbs.): _____

Combined Fat and Protein (CFP): Fat (lbs.): _____ + Protein (lbs.): _____ = _____ CFP

What % of your herd on the December 2008 test sheet is Accelerated Genetics' sired? _____

**** Please enclose your December 2008 test sheet (or a copy) with the sires of milking animals identified. Original test sheets will be returned. Copies of test sheets will not be returned.**

AFFIDAVIT VERIFYING APPLICANT MEETS MINIMUM QUALIFICATIONS:

1. To the best of my knowledge, 75% or more of the cows in this herd as of December 2009 are sired by Accelerated Genetics.
2. The applicant is currently using Accelerated Genetics' services.
3. A minimum of 10 cows are included in the herd average.
4. A copy of the December test sheet with identity of sires of the milking animals are enclosed with this application. Original test sheets will be returned. Copies of test sheets are accepted, but not returned.

Signed: _____ Signed: _____
(Accelerated Genetics Representative) (Applicant's Signature)

Applications must be postmarked by Friday, January 9, 2009

Send completed application to: Kelly Sheehan, Accelerated Genetics, E10890 Penny Lane, Baraboo, WI 53913

For questions, call 800.451.9275 ext. 221 or email ksheehan@accelgen.com

Young Producer Program

*As a cooperative, Accelerated Genetics needs producer leadership to make the organization thrive. The **Young Producer Program** was developed to build leaders for the future of the cooperative and all of agriculture.*

*The goals of the **Young Producer Program** and its activities are to educate producers, build leaders and provide opportunities to network.*

YOUNG PRODUCER PROGRAM

GOALS:

EDUCATION:

A large portion of the **Young Producer Program** involves education. Each activity offers industry relevant seminars and speakers, hands-on workshops and panel discussions. And, as always, participants will gain the most knowledge from their fellow producers.

LEADERSHIP:

The leadership training portion of the program allows opportunities for personal development through team building exercises, goal-setting workshops and farm communication sessions.

NETWORKING:

Young producers who attend the activities have many opportunities to learn from other participants, share information, and build life-long relationships.

YEARLY ACTIVITIES:

Activities are held throughout the year for young producers. The **Leadership** and **Fall Conferences** provide the most in-depth leadership training and focused industry-relevant educational sessions. The **Winter Get-Away** and **Summer Meltdown** are for individuals and couples as well as the entire family. These activities include a variety of topics including, but not limited to, farm visits, agricultural tours, and social activities.



Producers who are a part of the Accelerated Genetics Cooperative are given the opportunity to stand up, step out and speak out, while the Accelerated Genetics Board of Directors and Staff listen!

ELIGIBILITY:

The **Young Producer Program** is open to any producers or herdspeople, individuals or couples, who are interested in expanding their horizons, meeting other producers all while having a lot of fun. Anyone interested in becoming involved is encouraged to attend any or all the activities throughout the year.

Young Producer Program

YOUNG PRODUCER COMMITTEE

Once involved in the program, there are more opportunities for producers to take on leadership roles. The program's yearly activities and speakers are selected, organized, and coordinated by the **Young Producer Committee**.

The committee members can be individuals and couples from throughout Wisconsin, Minnesota, Iowa and Northern Illinois. This dynamic group encourages young producer involvement, plans annual events, and provides leadership to facilitate the continued success of the program. Committee members can serve two three-year terms. Elections for the **Young Producer Committee** are held each year during the Fall Conference.

PROGRAM SUCCESS

The **Young Producer Program** has a great success rate as it continues to graduate individuals into leadership roles.

The current 10-member Accelerated Genetics Board of Directors has several members who have been involved in the **Young Producer Program** over the years. Additionally, numerous county delegate and county chair positions within the Accelerated Genetics structure are occupied by young producer graduates.

The leadership at Accelerated Genetics continues to evolve from the success of the **Young Producer Program**.

ACCELERATED GENETICS YOUNG PRODUCER COMMITTEE

Joe & Donna Parrell

Cross Plains, Wis.

Tom & Katie Grady

Oregon, Wis.

Jamie & Amy Larson

Evansville, Wis.

Tim Bowers

Marion, Wis.

Blair & Kathy Sawall

Clintonville, Wis.

Dave & Kelly Oberreich

Plymouth, Wis.

Jeff & Tammy Styczynski

Pulaski, Wis.

Brian Castleberg

Mondovi, Wis.

YOUNG PRODUCER PROGRAM COORDINATOR

Kari Stanek

YOUNG PRODUCER PROGRAM MISSION STATEMENT

The Accelerated Genetics Young Producer Program is designed to help producers develop friendships, build leadership qualities and strengthen communication skills through an educational, supportive network in a fun environment.

Winter Get-Away 2009

CHILL OUT!

Jan. 31-Feb. 1, 2009 • Kalahari Resort • Wisconsin Dells, Wis.

WHO CAN ATTEND?

The Accelerated Genetics Young Producer Program is open to any producer—farm owners or herdspeople. Anyone interested in being involved is encouraged to attend this conference or any other Young Producer event throughout the year.

WHY ATTEND?

This 'COOL' weekend 'get-away' is designed for young producers—individuals, couples and their families. It is a great way to get rid of the winter blahs, get off the farm to spend time enjoying life, learn something new, and stay warm inside with fellow producers. Accelerated Genetics thinks **YOU** deserve an opportunity to enjoy a 'COOL' weekend away at the Kalahari Resort.

'CHILL OUT' THEME:

For this year's theme, 'CHILL OUT', we would like producers to dress up on Saturday (including dinner) as if we had gone back in time...locate some of the 'old favorites of yester-year' like ear-flap hats, leg warmers, 5-buckle galoshes, hand muffs, and more! Prizes will be awarded for Best Dressed during dinner!

YOUR COST:

The meals and program are compliments of Accelerated Genetics. Your only cost will be your hotel room at \$139.00/night. This includes wristbands for entry into the waterpark for four people. Additional wristbands can be purchased for \$10.00/person. (Normal room rates are \$250.00 or more/night).

COME EARLY & STAY LATE:

Room rates are available for both Friday and Saturday nights. Check in time is 4:00 pm and check out is 11:00 am, but you can swim in the waterpark till closing at 10:00 pm Saturday or 9:00 pm Sunday.

'CHILL OUT' DRAWING:

If you attend the Winter Get-Away you will be entered in a drawing for a 'Free Stay' at the Kalahari Resort!

REGISTERING:

Please register for the 'CHILL OUT' Winter Get-Away by **JANUARY 5TH** via postcard (located below) or call 1.800.451.9275 ext. 222 or email kstanek@accelgen.com.

2009 WINTER GET-AWAY REGISTRATION

Name(s): _____

Kid(s) Names & Ages: _____

Address: _____

City: _____ State: _____ Zip: _____

Phone: _____ Email: _____

YES, Please register me/us for the Winter Get-Away - Jan. 31-Feb. 1, 2009

Hotel Rooms: (\$139.00/night includes wristbands for 4 people, extra wristbands \$10/person)

Please register me/us at the hotel for:

(Please Circle)

Saturday Only

Friday & Saturday

Youth Activity at Kalahari Indoor Theme Park: (ages 8-18)

of Kids _____ Adult Chaperone: YES - Who _____

YES, Send information on the Leadership Conference - March 28-29, 2009

YES, Send information on the Summer Meltdown - June 13, 2009

YES, Send information on the Fall Conference - November or December, 2009

Please Register by **JANUARY 5, 2009** With:

Kari Stanek • Ph:800.451.9275 ext. 222 • Fax: 608.356.1715 • Email: kstanek@accelgen.com

Winter Get-Away 'CHILL OUT' SCHEDULE

Saturday, January 31, 2009

12:30-1:00 p.m. Registration ~ 'WELCOME TO THE CHILL ZONE'

12:30-1:30 p.m. 'CHILL OUT' Activities (*All Ages*)

1:30-2:30 p.m. Welcome Program & Introductions

2:30-4:30 p.m. **Adult Session** ~

- 'Business Planning and Farm Transitions'

Youth Sessions ~

- Chillin' Kids (*ages 8-18*) - Go to Kalahari Indoor Theme Park
 - Youth will need an adult to chaperone them in order to attend.
 - Please register both adults and youth attending.
- Kool Kittens (*ages 7 and under*) - Mini 'CHILL OUT' Activities & Movies
 - Children need an adult to supervise them at this activity.

4:30-6:30 p.m. Break & Waterpark Time (*Waterpark Hours - 9:00 a.m.-10:00 p.m.*)

6:30-7:30 p.m. 'CHILL OUT' Dinner (*Best Dressed Awards will be presented!*)

7:30-10:00 p.m. Networking Time or More Waterpark Time

- Mingling, Cards, Games, Movies will be available in the room.

10:00-12:00 a.m. 'CHILL OUT' Pajama Party, Ice Cream Social, and Movie

Schedule Continued on Page 11!

Please register for the 'CHILL OUT' Winter Get-Away by January 5th via postcard below!

Accelerated Genetics®



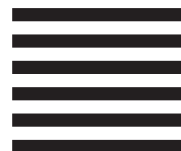
NO POSTAGE
NECESSARY
IF MAILED
IN THE
UNITED STATES

BUSINESS REPLY MAIL

FIRST-CLASS MAIL PERMIT NO. 116 BARABOO, WI

POSTAGE WILL BE PAID BY ADDRESSEE

KARI STANEK
ACCELERATED GENETICS
E10890 PENNY LN
BARABOO WI 53913-9939



Winter Get-Away 'CHILL OUT' SCHEDULE

Sunday, February 1, 2009

8:00-9:00 a.m. Breakfast

9:00-9:30 a.m. 'CHILL OUT' Scavenger Hunt *(All Ages)*

9:30-10:30 a.m. **Adult Session** ~

- 'Farm Health Care Update'

Youth Session ~

- 'Hands-On Home Safety' *(All Ages)*
- Children need an adult to supervise and learn along with them.

10:30-11:00 a.m. Break & Check Out of Hotel Rooms

11:00-12:00 p.m. 'CHILL OUT' Farm Family Entertainment *(All Ages)*

12:00 p.m. Closing Remarks

(After the program is done you can still use waterpark until 9:00 p.m. Sunday night!)

This year's theme is
'CHILL OUT!'
We would like you to dress
up in your favorite Winter
Clothing of the PAST.
Prizes will be awarded for
Best Dressed!

Leadership Conference 2009

LEADERS WANTED FOR THE YOUNG PRODUCER LEADERSHIP CONFERENCE

Young producers interested in learning new things and meeting other producers should check out Accelerated Genetics' upcoming Young Producer **Leadership Conference**. This year's event titled 'Breaking New Ground' will take place March 28-29, 2009 in Wisconsin Dells, Wis. at the Wintergreen Resort and Conference Center.

Accelerated Genetics has specifically tailored the **Leadership Conference** for persons who would like to improve leadership skills, participate in educational activities, network with other producers and have good time doing it.

Speakers Jolene Brown, Donna Moening, and Tom Jadin will be featured at the **Leadership Conference**, along with other educational and fun-filled sessions

designed to help producers manage and lead their family, farm and cooperative in the future.

The **Leadership Conference** is designed for emerging young leaders (individuals or couples) who have not previously participated in this conference. Reservations need to be made by March 2nd.

The Accelerated Genetics **Young Producer Program** is open to any dairy or beef producer, individuals or couples, who are interested in expanding their horizons, meeting other producers, and having fun doing it. Anyone interested in becoming involved is encouraged to attend any or all the Young Producer activities throughout the year!

To make reservations for the **Leadership Conference**, call 1-800-451-9275 Ext. 222 or email kstanek@accelgen.com by March 2nd. All costs for the conference are covered by Accelerated Genetics.

Summer Meltdown Celebration 2009

The Annual Young Producer **Summer Meltdown Celebration** event is set for June 13, 2009 at the Hoard's Dairyman Farm in Fort Atkinson, Wis. The focal point of their new facility is the milking center with a double-10 herringbone parlor. The farm uses electronic ID using neck-chain transponders. This system and automatic sort gates, eliminates the need for lockups in the free stall barn, permits milking summary reports and free stall barn activity reports that assist the herd with heat detection.

Following the farm tour, producers and their families will be treated to lunch on the farm. Then the **Summer Meltdown Celebration** will move to the Hoard Historic Museum and the National Dairy Shrine Visitors Center— which captures the sights and sounds of dairy farming of the past, present and future.

Fall Conference 2009

The **Fall Conference** for 2009 is still in the planning stages and looks to be held in either November or December 2009. If you have any ideas for speakers or sessions please let the Young Producer Committee members know as it is the next event that they will be planning.

The **Fall Conference** will surely be an educational and fun-filled weekend for producers to attend. There are always many informative and educational seminars held throughout the two-day event covering topics from Herd Health and Reproduction to Farm Business Planning and Neighbor/Consumer Relations. Additionally, the Young Producer Committee elections are held each year at this event. The **Fall Conference** is a way for young producers to meet and network with each other. Look for more information next spring!



E10890 Penny Lane, Baraboo, WI 53913-9408

Address Service Requested